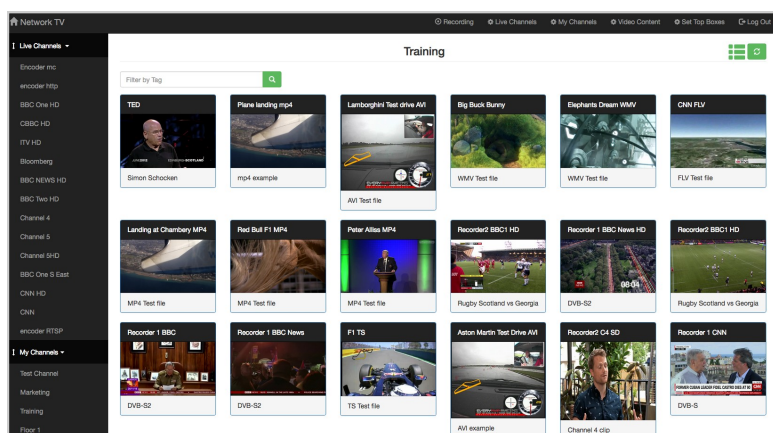


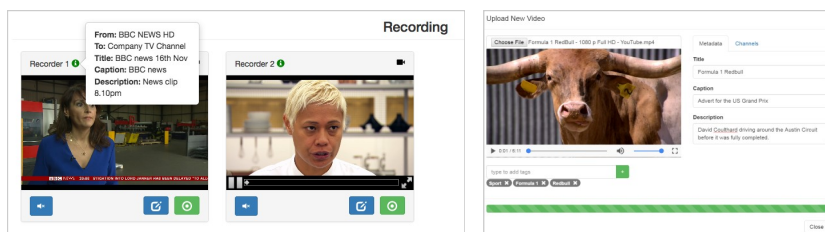
NetworkTV

NetworkTV is a complete IPTV solution that helps an enterprise manage and control its live and recorded digital video content.

NetworkTV presents a simple-to-use management portal in an HTML5 browser to control IPTV hardware devices including encoders, tuners, streamers and set-top-boxes across an intranet. It also provides an integral library function to help clients organise recordings and pre-recorded content.



If an organisation has existing content, it can be uploaded into the centralised NetworkTV library with the facility to add metadata, poster frames and tagging that will ensure searching for videos is a simple task for their users.



NetworkTV can incorporate existing equipment and streams into its environment so that users do not have to discard those old encoders or PTZ cameras. We have also created a number of modules for NetworkTV to be integrated into enterprise room control systems.

So not only does NetworkTV provide all of the functionality you will need for digital video content management, it's also easy to manage and simple to use.

Complete Starter Packages

We have introduced several pre-configured starter packages that combine **NetworkTV** software and hardware components. This will make it simpler for you to choose a suitable solution to meet your IPTV and video content management requirements. Each package contains everything you need for delivering video content across your IP network.

The **NetworkTV Live Packages** provide complete low cost solutions for those clients that only want to deliver live streams (such as TV channels, encoded streams or IP camera feeds). These packages include NetworkTV hardware and software with options for different types of DVB, DTMB and ATSC/Clear QAM tuners.

The **NetworkTV CMS Packages** additionally include recording, content management, archiving and VoD.

The benefit of our pre-configured packages is that you don't have to waste time trying to understand different components, part numbers and what's needed when configuring an ideal solution - nor be concerned about the geographical location or future scalability. All of the packages provide the foundation and capability for large-scale expansion to support hundreds of TV channels, encoders, set-top-boxes, PC and VoD users, as well as handling numerous simultaneous recordings and terabytes of content. Alternatively install NetworkTV as a Virtual Machine.

NetworkTV Key Features....

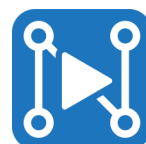
NetworkTV has been designed as a complete solution that incorporates all of the key features you are likely to require including:

- **Simple-to-use Portal** - Watch live TV, browse through the library of on-demand content or search for specific video content within a single, simple uncomplicated user interface in an HTML5 browser. Access the content from PCs, mobile devices or set top boxes.
- **System Management** - Manage Encoders, tuners, set-top-boxes, content, recording, metadata and streams from a PC or mobile device.
- **TV Channels** - manage and distribute DVB Terrestrial/Cable/Satellite, DTMB & ATSC/Clear QAM TV channels.
- **Encoding** - HDMI and HD-SDI, Composite & S-Video encoders to create full HD1080P digital video streams as well as secondary low bit rate streams to send to YouTube, Facebook Live etc.
- **SAP Announcements** - Provide SAP announcements for all live channels so users can watch in a media player such as VLC.
- **Recording & Video Archiving** - Simultaneous recording of different sources in almost any format or upload your existing content into the NetworkTV library.
- **Central Library** - Upload existing content in any video format and record new streams into a centralised archive with 1500 hours storage capacity.
- **Search** - Find your video in the library with full search facilities using favourites, metadata tags, and thumbnails.
- **Video-on-Demand (VoD)** - Browse the library or search for content to play on demand or push specific content to individual, groups or all users.
- **Streaming** - NetworkTV works with multicast, unicast RTSP, RTP, RTMP, HTTP and HLS streams as well as offering "pull and push" streaming.
- **HLS** - Convert and deliver any live H.264 stream to send HLS streams to PC and mobile users with the simple click of a button.
- **Transcoding** - NetworkTV Transcoding enables live content to be converted into a compatible format for delivery to the users preferred viewing device, whether that's a TV/display screen, a computer or a mobile device. Combining Transcoding with HLS and you have an optimised delivery mechanism for extending your IPTV channels and content to users wherever they are.
- **Multiscreen Support** - NetworkTV provides the flexibility and control to deliver live SD, HD and UHD streams and content to PCs, STBs, digital signage players, tablets and smartphones.



- **Multi-format Video Support** - NetworkTV will simultaneously support all of the main video formats including MPEG2 TS, H.264, MP4, AVI, MOV, FLV and WMV. NetworkTV can already support 1080P HD as well as 4K UHD streams and content.
- **Playlists** - Create Playlists of content and add them as live channels.
- **Virtual Matrix** - Create a matrix of inputs (from IP encoders, IP cameras or live TV streams etc) and route them to destination endpoint decoders.
- **Scalability** - NetworkTV provides the foundation for unlimited expansion supporting hundreds of TV channels, encoders, STBs, PCs and VOD users, as well as handling numerous simultaneous recordings and terabytes of content storage.
- **Compatibility & Legacy** - Integrate with Crestron or AMX control systems, utilise your current encoders and upload your existing content.
- **Management Server** - Standard Packages offer 1U short form factor server with 16GB RAM, 4TB/2000 hours storage and quad core CPU processors. Options to increase the specification of the server or provide virtual machine.

If your requirements are more sophisticated than one of our packaged configurations, then we are happy to help you design and provide a fully customised solution. We are also able to provide a range of support services to simplify the implementation of your organisation's video distribution needs.



NETWORKTV

tv, video and av on your network

NetworkTV Live Starter Packages

NetworkTV Live packages provide complete low cost simple TV solutions for clients that only want to deliver live broadcast or encoded streams to STBs, PCs, signage players or video walls. These packages include NetworkTV hardware and software with options for different types of DVB and ATSC tuners and encoders. NetworkTV Live packages include:

1. NetworkTV server with 4GB RAM and 128GB HDD or NetworkTV Gateway Chassis with DVB, DTMB or ATSC tuners
2. NetworkTV middleware that includes management admin portal, control of multi-format live streams/channels, channel line-up, creating HLS streams, encoder management, set top box management
3. Unlimited number of users

NTVLIVE01: NetworkTV Live with 4 x DVB-T/T2/C Tuners — Distribute live terrestrial or cable TV channels as multicasts including live Freeview TV channels from four multiplexes/bouquets.

NTVLIVE02: NetworkTV Live with 2 x DVB-T/T2/C Dual Common Interface Tuners — Distribute live terrestrial or cable encrypted TV channels as multicasts from two multiplexes/bouquets (NetworkTV is compatible with several different types of CAMs, so please contact us for more details). It can also manage and distribute encoded streams.

NTVLIVE03: NetworkTV Live with 4 x DVB-S/S2 Tuners — Distribute live satellite TV channels as multicasts including live Freesat TV channels from four multiplexes/bouquets as video streams It can also manage and distribute encoded streams.

NTVLIVE04: NetworkTV Live with 2 x DVB-S/S2 Dual Common Interface Tuners — Distribute live satellite encrypted TV channels as multicasts from two multiplexes/bouquets (NetworkTV is compatible with several different types of CAMs, so please contact us for more details). It can also manage and distribute encoded streams.

NTVLIVE05: NetworkTV Live with 8 x DVB-T/T2/C Tuners — Distribute live terrestrial or cable TV channels as multicasts from eight multiplexes/bouquets. It can also manage and distribute encoded streams.

NTVLIVE06: NetworkTV Live with 8 x DVB-S/S2 Tuners — Distribute live satellite TV channels as multicasts including live Freesat TV channels from eight multiplexes/bouquets as video streams It can also manage and distribute encoded streams.

NTVLIVE07: NetworkTV Live with 4 x DTMB Tuners — Distribute live DTMB TV channels as multicasts from four multiplexes/bouquets.

NTVLIVE08: NetworkTV Live — Manage and distribute live streams from encoders, IP cameras or 3rd party TV head-ends. This package is also useful for encoding a signage player output and turning it into a TV channel to deliver to PC or mobile users as well as STBs.

NetworkTV CMS Starter Packages

NetworkTV CMS packages contain everything you need for distributing video streams as multicasts or unicast around an intranet. Record video streams simultaneously and store them, along with the capability to upload existing video content into a centralised library archive accessible as Video-On-Demand by either PC or STB users. NetworkTV CMS packages include:

1. NetworkTV enhanced server spec with 16GB RAM and 4TB HDD
2. NetworkTV middleware that includes management admin portal, control of multi-format live streams/channels, channel line-up, creating HLS streams, encoder management, STB management, recording, library archive. Playlists, Virtual Matrix and VoD
3. Unlimited number of users

NTV09: NetworkTV middleware with server — The package includes a NetworkTV Server and management software providing administrator and user interfaces.

NTV10VM: NetworkTV Licence as a Virtual Machine Image — Install the NetworkTV CMS in your environment as a virtual machine.

For more details on the starter packages and all of our related accessories, please see our website www.networktv.tv

WHY NOT CONTACT US TODAY TO DISCUSS YOUR NEEDS info@networktv.tv